



United States Distribution Group, Inc.

P.O. Box 382783, Birmingham, Alabama 35238

Phone: 205-981-1463 Fax: 205-981-1656 E-mail: usdginc@bellsouth.net

US Distribution Group, Inc.

VENDOR DATA REQUIREMENTS

SECTION I: DRAWINGS

CODE D-6 & 8 / DRAWINGS

RESUBMITTAL: MARCH 16, 2006

PKG #WN-T002-00105

Received

MAR 24 2006

FluorAMEC DC

Project No.: 5-002
Project Name: Erbil/Ifraz Water Works Project
Purchase Order No.: 5-002-04-G-50022-009
Project Location: Erbil/Ifraz, Iraq

Manufacturer: Ross Valve
Model: 42WR-S-SO
Description: 20" Pump Control Electric check valve, with emergency quick close feature, ANSI 125# Flanges, Cast Iron Body & Covers (ASTM A-126 Class B), Bronze internals (ASTM B-62), Globe full-ported piston style construction, Rigid Red Brass control piping and copper alloy C Control fittings, Internal/External NSF 61 coating on all ferrous surfaces. Valve shall operate at Max. pressure of 177 PSI.

FluorAMEC, LLC

A - PROCEED
 B - PROCEED AS NOTED, CHANGE AS NOTED AND RESUBMIT
 C - DO NOT PROCEED, CHANGE AS NOTED AND RESUBMIT
 D - INFORMATION ONLY
 Q - QUALITY IS BELOW STANDARDS, CORRECT AND RESUBMIT

Authorization to proceed does not relieve contractor/vendor of its responsibility or liability under the contract purchase order.

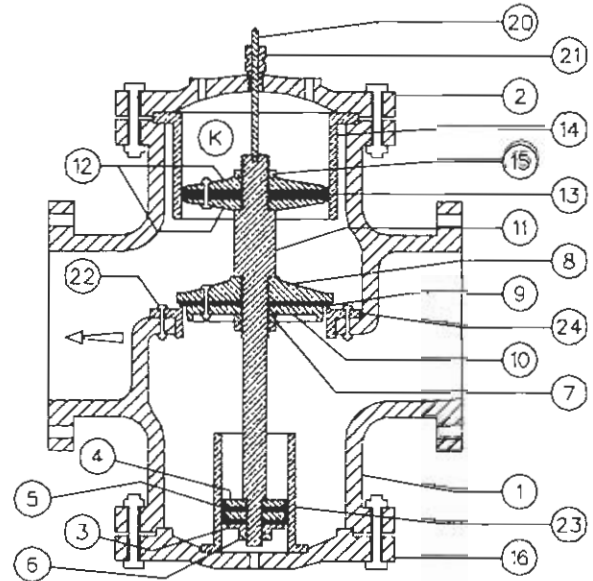
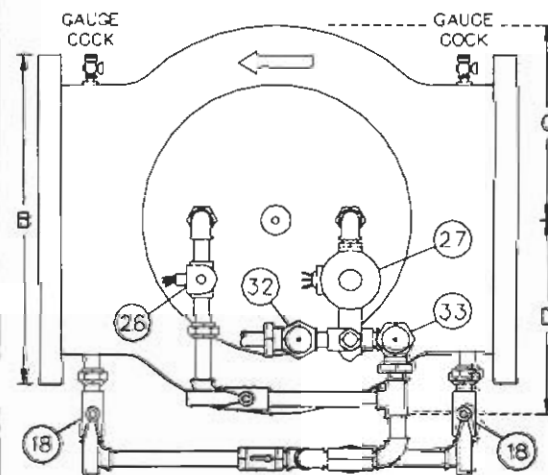
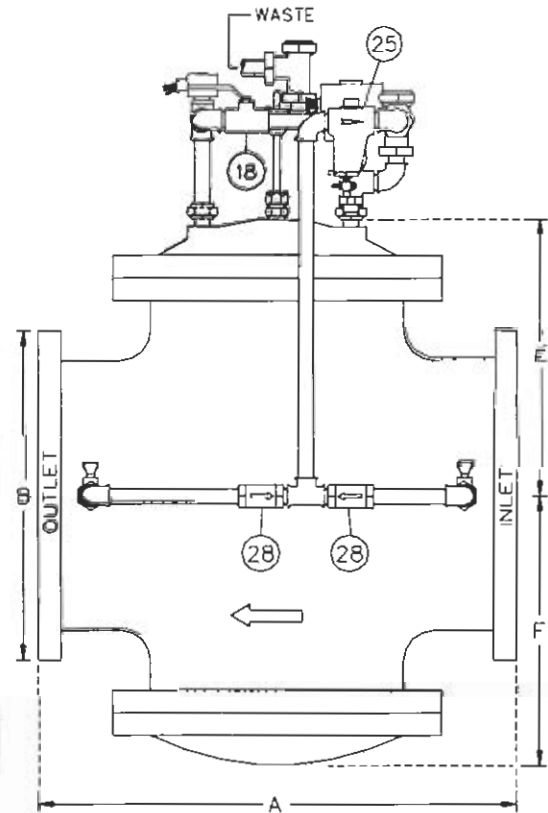
SIGNATURE GSpen DATE 7-01-06



PKG # WN-T002-00140

PO # 5-002-04-G-50022

WNT002-01667-R1



VALVE SIZE (IN)	ASME B.16.1 CLASS	SHIPPING WEIGHT (LBS)	DIMENSIONS (INCHES)				
			A	B	C&D	E	F
2	125	235	14	6	4-3/4	7	7
	250	275	14-5/8	6-1/2	4-3/4	7	7
2.5	125	235	14	7	4-3/4	7	7
	250	275	14-5/8	7-1/2	4-3/4	7	7
3	125	235	14	7-1/2	4-3/4	7	7
	250	275	14-5/8	8-1/4	4-3/4	7	7
4	125	235	14	9	4-3/4	7	7
	250	275	14-5/8	10	4-3/4	7	7
6	125	375	17-3/4	11	6-5/8	9	9
	250	430	17-3/4	12-1/2	6-5/8	9	9
8	125	690	24	13-1/2	8-3/4	12-1/2	12-1/2
	250	750	24-13/16	15	8-3/4	12-1/2	12-1/2
10	125	920	24-7/8	16	10	14-1/4	14-1/4
	250	1000	25-1/4	17-1/2	10	14-1/4	14-1/4
12	125	1375	30	19	12	15-1/2	15-1/2
	250	1475	31-1/2	20-1/2	12	15-1/2	15-1/2
14	125	1770	34-1/4	21	14	18	18
	250	1850	35-3/4	23	14	18	18
16	125	2400	37-7/8	23-1/2	15	21-1/2	21-1/2
	250	2600	39-1/4	25-1/2	15	21-1/2	21-1/2
18	125	3100	41-7/8	25	18-3/8	24	24
	250	3504	44-7/8	28	18-3/8	24	24
20	125	3550	47-1/2	27-1/2	18-3/8	24	24
	250	3800	47-5/8	30-1/2	18-3/8	24	24
24	125	5200	47	32	20	25	25
	250	5500	47	36	20	25	25
30	125	9800	53-3/4	38-3/4	26-1/4	34	34
	250	10800	55-1/16	43	26-1/4	34	34
36	125	11800	65	46	26-1/4	34	34
	250	12800	65	50	26-1/4	34	34

PART	DESCRIPTION	QTY.	MATERIAL
1	VALVE SHELL	1	CAST IRON
2	TOP CAP	1	CAST IRON
3	BOTTOM STEM GUIDE NUT	1	BRONZE
4	BOTTOM CUP FOLLOWERS (SET OF 2)	1	BRONZE
5	PISTON CUP PACKING	2	LEATHER
6	BOTTOM STEM LOCK NUT	1	BRONZE
7	STEM NUT	1	BRONZE
8	SEAT DISC	1	BRONZE
9	SEAT PACKING	1	POLYURETHANE
10	SEAT PACKING SUPPORT	1	BRONZE
11	STEM	1	BRONZE
12	MAIN CUP PLATES (SET OF 2)	1	BRONZE
13	MAIN CUP PACKING	2	LEATHER
14	MAIN BUSHING	1	BRONZE
15	TOP STEM NUT	1	BRONZE
16	BOTTOM CAP	1	CAST IRON
18	ISOLATION VALVE	2	BRONZE
20	INDICATOR ROD	1	BRONZE
21	INDICATOR STUFFING BOX	1	BRONZE
22	BOLTS & NUTS (SEAT RINGS)	VARY	BRONZE
23	BOTTOM CAP CYLINDER	1	BRONZE
24	SEAT RING	1	BRONZE
25	STRAINER	1	BRONZE/STAINLESS
26	SOLENOID 2-WAY = EMERGENCY	1	BRONZE/STAINLESS
27	SOLENOID 3-WAY = NORMAL	1	BRONZE/STAINLESS
28	CHECK VALVE	2	BRONZE
32	NEEDLE VALVE = OPENING CONTROL	1	BRONZE
33	NEEDLE VALVE = CLOSING CONTROL	1	BRONZE
	BOLTS & NUTS (TOP & BOTTOM CAP)	VARY	STEEL
	BOLTS & NUTS (CUP PLATES)	VARY	BRONZE
	BOLTS & NUTS (SEAT DISC)	VARY	BRONZE
	BOLTS (BOTTOM CAP CYLINDER)	VARY	BRONZE
	INDICATOR ROD PACKING (SET)	1	TEFLON
	COVER & MAIN BUSHING GASKETS	3	COMPOSITION
	STEM GASKETS	3	COMPOSITION

ROSS VALVE Mfg. Co. Inc.
 9 GARWOOD AVENUE - TROY, NEW YORK 12180 - TEL (518) 274 6961
 POST OFFICE BOX 585 - TROY, NEW YORK 12181 - FAX (518) 274 0210
 WEBSITE: www.rossvalve.com - E-MAIL: sales@rossvalve.com

DRAWING 42WRS-SO 2-36 DATE 10/26/01 RJL
 GLOBE BODY 2" - 36" NO SCALE FIGURE 44EG
 Model 42WRS-SO
 PUMP CONTROL VALVE (ELECTRIC CHECK)
 WITH EMERGENCY CLOSE FEATURE