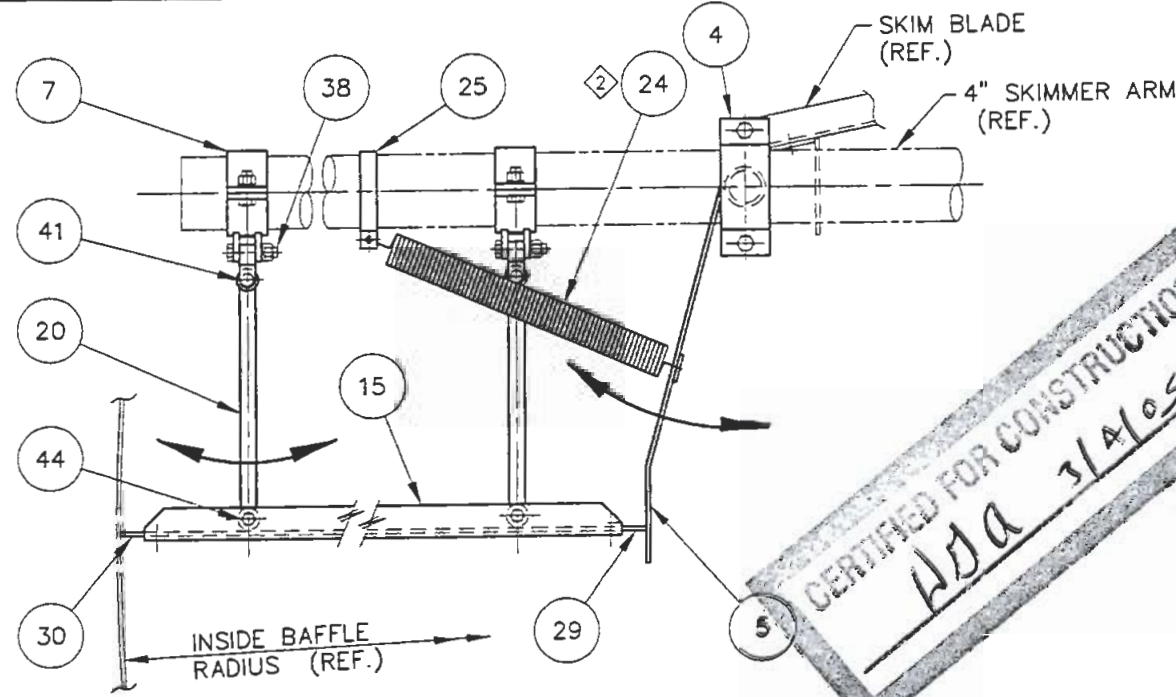


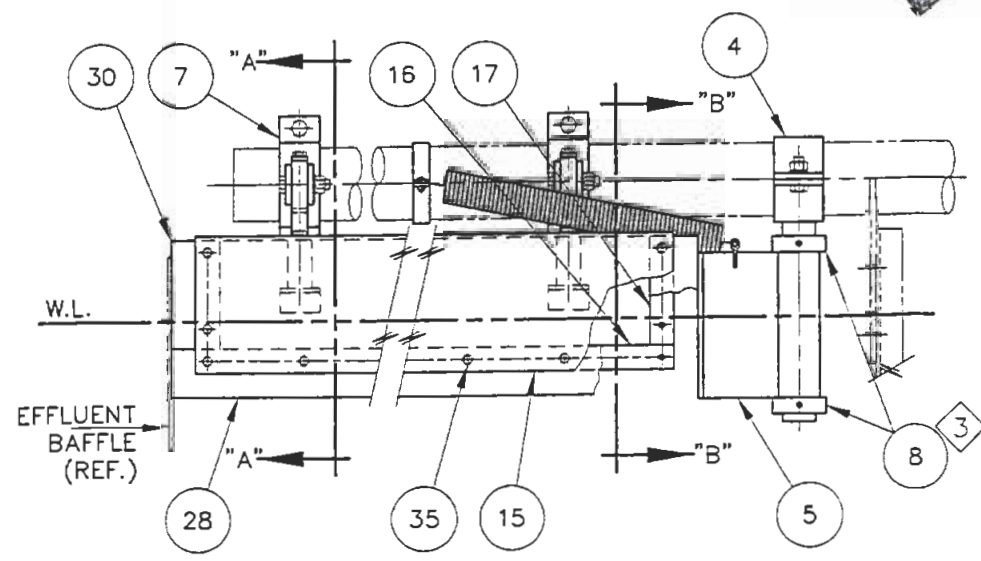
ITEM	QTY	MAT'L	DESCRIPTION
4	1	HDG STL	HINGED SKIMMER SUPPORT
5	1	HDG STL	HINGED SKIMMER
7	2	HDG STL	PIVOT YOKE
8	2	HDG STL	SET COLLAR
15	2	ALUM	SKIMMER BLADE
16	2	ALUM	WIPER RETAINER - BOTTOM
17	2	ALUM	WIPER RETAINER - SIDE
20	2	CAST ALUM	SUPPORT ARM
21	2	CAST ALUM	PIVOT
24	1	S.S.	EXTENSION SPRING
25	1	HDG	PIPE CLAMP
28	1	NEOP	WIPER - BOTTOM
29	1	NEOP	WIPER - SIDE
30	1	NEOP	WIPER - BAFFLE SIDE

THIS IS NOT A PARTS LIST
USE FOR I.D. OF MAJOR COMPONENT ITEMS ONLY.



CERTIFIED FOR CONSTRUCTION
 WJA 3/4/05

- NOTES:
1. WORK WITH MECHANISM GENERAL ARRANGEMENT & GENERAL NOTES DRAWINGS AND SCUM SKIMMER PARTS LIST.
 2. ASSEMBLE SPRING (ITEM #24) ABOVE SUPPORT ARM (ITEM #20).
 3. INSTALLER TO DRILL A SLIGHT DIMPLE INTO SKIMMER ARM PIPE FOR ALL SET SCREWS.



PREPARED FOR: ERBIL - IFRAZ WATER PROJECT
 UNITED STATES DEPARTMENT OF STATE
 IRAQ INFRASTRUCTURE RECONSTRUCTION PROGRAM
 CONTRACT NO. W914NS-04-D-0008
 NORTH, IRAQ

ENGINEER: FLUORAMEC. LLC
 GREENVILLE, SOUTH CAROLINA

CONTRACTOR: FLUORAMEC. LLC
 GREENVILLE, SOUTH CAROLINA

CUSTOMER P.O. NO. A5GQ-002-01-G-40001

SCUM SKIMMER ASSEMBLY

DESCRIPTION		4" SUPPORT / SINGLE		5'-0" WIDE	
MODEL		SIZE		SKXA5005 .125 x 8	
7-93	TH	RRO	STB	NONE	1-05
TH	DJS	DDK	DATE	PROJ. BY	PROJ. CHKD.
DATE	STD. BY	STD. CHKD.	STD. APPVD	SCALE	DATE

This drawing is property of WESTECH ENGINEERING, INC. and is transmitted in confidence. Neither receipt nor possession confers or transfers any rights to reproduce, use, or disclose, in whole or in part, data contained herein for any purpose, without the written permission of WESTECH ENGINEERING, INC., Salt Lake City, Utah

DRAWING NUMBER	PROJECT NUMBER	REV.
C106	19587A	A

FluorAMEC, LLC

A - PROCEED
 B - PROCEED AS NOTED, CHANGE AS NOTED AND RESUBMIT
 C - DO NOT PROCEED, CHANGE AS NOTED AND RESUBMIT
 D - INFORMATION ONLY
 Q - QUALITY IS BELOW STANDARDS, CORRECT AND RESUBMIT

Authorization to proceed does not relieve contractor/vendor of its responsibility or liability under the contract/purchase order.

Signature: *Donald A. Helms* DATE: 3/4/05

EarthTech
 A Technipipe Company

A. Proceed
 B. Proceed as Noted, Change as Noted and Resubmit.
 C. Do Not Proceed, Change as Noted and Resubmit.
 D. Information Only Receipt Acknowledge
 Q. Quality is Below Standards, Correct and Resubmit

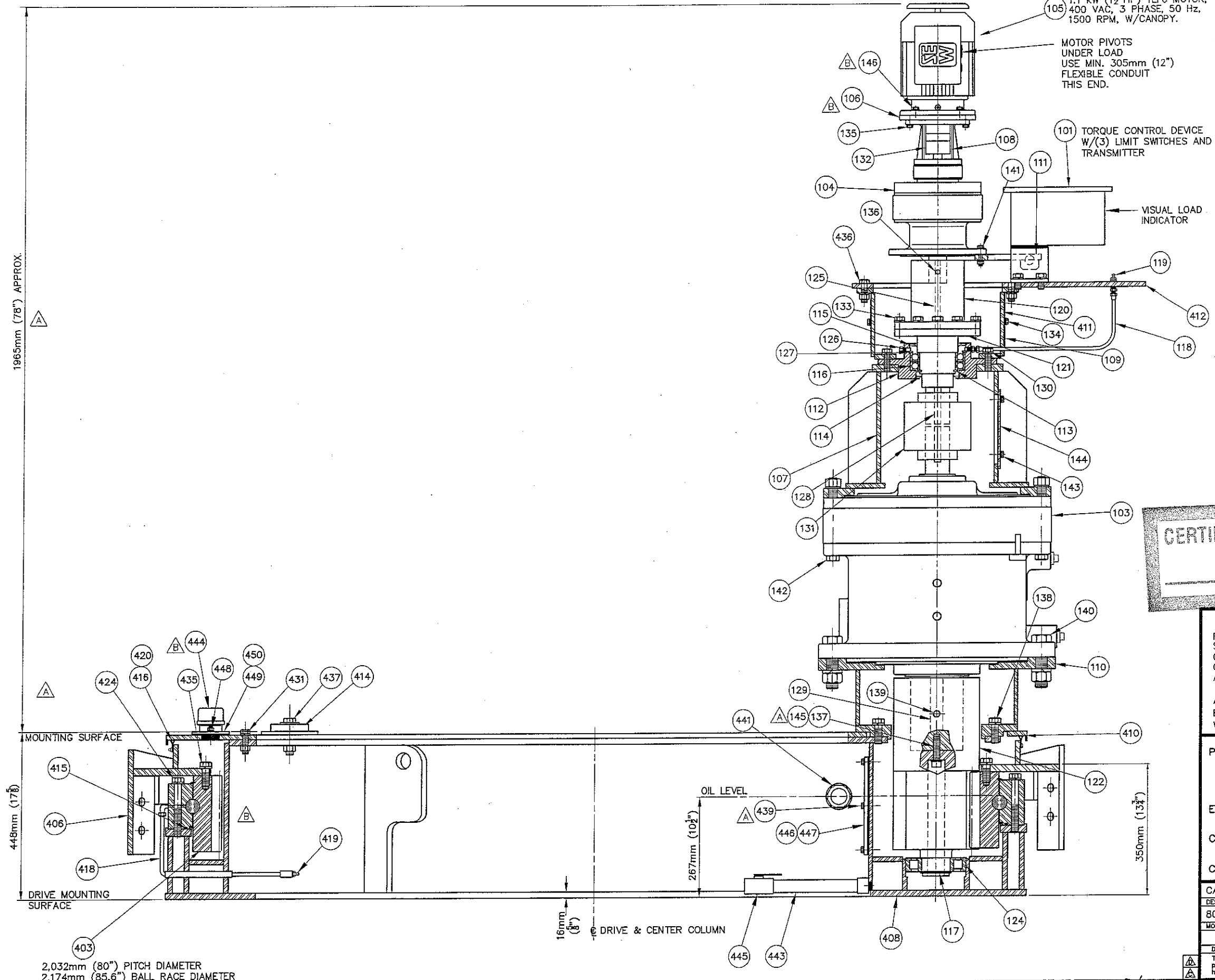
Authorization to proceed does not relieve contractor/vendor from its responsibility or liability under the contract/purchase order.

Signature: *Mark H. H.* Date: 3/25/05

NEOP WAS PVC	TFP	DJS	2/05
REVISION	BY	CHKD	DATE

WN-7002-00032-R1-1

1965mm (78") APPROX.



ITEM	QUANTITY	MATERIAL	DESCRIPTION
101	1	SS	TORQUE CONTROL DEVICE
103	1	C.I./STL	SPEED REDUCER
104	1	C.I./STL	SPEED REDUCER
105	1	C.I./STL	DRIVE MOTOR
106	1	STL	ADAPTER PLATE
107	1	STL	REDUCER ADAPTER
108	1	PC	COUPLING GUARD
109	1	SS	GUARD
110	1	STL	UPPER BEARING HOUSING ADAPTER
111	1	A36	TORQUE ARM
112	1	C.I.	UPPER BEARING HOUSING
113	1	STL	RETAINING RING
114	1	NBR/STL	LOWER SEAL
115	1	NBR/STL	UPPER SEAL
116	2	ALLOY STL	UPPER BEARING
117	1	STL	RETAINING RING
119	1	STL	GREASE FITTING
120	1	ALLOY STL	REDUCER SHAFT ADAPTER
121	1	ALLOY STL	UPPER BEARING SHAFT
122	1	ALLOY STL	PINION SHAFT W/PINION
124	1	ALLOY STL	CYLINDRICAL ROLLER BEARING
125	1	STL	KEY
126	1	STL	PRESSURE RELIEF FITTING
127	1	STL	RETAINING RING
131	1	NBR/STL	SHAFT COUPLING
132	1	NBR/STL	SHAFT COUPLING
403	1	ALLOY STL	MAIN GEAR/BEARING
406	1	A36 STL	CAGE ADAPTER
408	1	A36 STL	BASE
410	1	A36 STL	COVER
411	1	C.I.	TORQUE BOX ADAPTER SPACER
412	1	STL	TORQUE BOX ADAPTER
414	2	A36 STL	WALKWAY CLAMPS
415	1	NEOP	O-RING
416	1	NEOP	DOUBLE LIP SEAL
419	2	STL	GREASE FITTING
441	1	SS	OIL LEVEL SIGHT GLASS
443	1	STL	OIL DRAIN PIPING
444	1	STL	OIL FILL CAP/BREATHER
445	2	BRZ	OIL/CONDENSATE DRAIN VALVE
446	1	STL	PINION INSPECTION PORT COVER
447	1	NEOP	PINION INSPECTION PORT GASKET
449	1	STL	GEAR INSPECTION PORT COVER
450	1	NEOP	GEAR INSPECTION PORT COVER GASKET

THIS IS NOT A PARTS LIST, USE FOR MAJOR COMPONENT IDENTIFICATION ONLY.

CERTIFIED FOR CONSTRUCTION
WGA 3/4/05

DRIVE RATING INFORMATION		
FULL DIAL TORQUE	288,000 Nm (212,418 FT-LBS)	160%
SECOND CUTOFF TORQUE	234,000 Nm (172,589 FT-LBS)	130%
CUTOFF TORQUE	180,000 Nm (132,761 FT-LBS)	100%
CONTINUOUS TORQUE	180,000 Nm (132,761 FT-LBS)	100%
ALARM TORQUE	135,000 Nm (99,571 FT-LBS)	75%

APPROX. OIL CAPACITY 83 L (22 GAL.) / MAIN GEAR
ESTIMATED WEIGHT 3,200 kg (7,000 LBS.)
WORK WITH DRAWING: D350R119-19587A

PREPARED FOR: ERBIL-IFRAZ WATER PROJECT
CONTRACT NO. W914NS-04-D-0008
UNITED STATES DEPARTMENT OF STATE
IRAQ INFRASTRUCTURE RECONSTRUCTION PROGRAM
NORTH, IRAQ

ENGINEER: FLUOR AMEC, LLC
GREENVILLE, SOUTH CAROLINA

CONTRACTOR: FLUOR AMEC, LLC
GREENVILLE, SOUTH CAROLINA

CUSTOMER P.O. NO. A56Q-002-01-G-40001

CAGE DRIVE ASSEMBLY - ELEVATION

DESCRIPTION	2,032mm (80")			
MODEL	8050	SIZE	19587A	
DATE	STD. BY	STD. CHKD.	STD. APPVD	SCALE
				NONE 01-05 JLPW RHS SM

This drawing is property of WESTECH ENGINEERING, INC. and is transmitted in confidence. Neither receipt nor possession confers or transfers any rights to reproduce, use, or disclose, in whole or in part, data contained herein for any purpose, without the written permission of WESTECH ENGINEERING, INC., Salt Lake City, Utah

Westech DRAWING NUMBER: D350R118 PROJECT NUMBER: 19587A

ITEM 442 REMOVED, ITEM 444 MOVED, ITEMS 106 AND 146 ADDED	RHS DK	02/05
439 WAS 448, ADDED 145, REMOVED WALKWAY BEAM DIM., 78 WAS 65	JLPW RHS	2-05
REVISION	BY	CHKD
		DATE